

CERTIFICATE OF LOCATION OF GOVERNMENT CORNER

County of Anoka

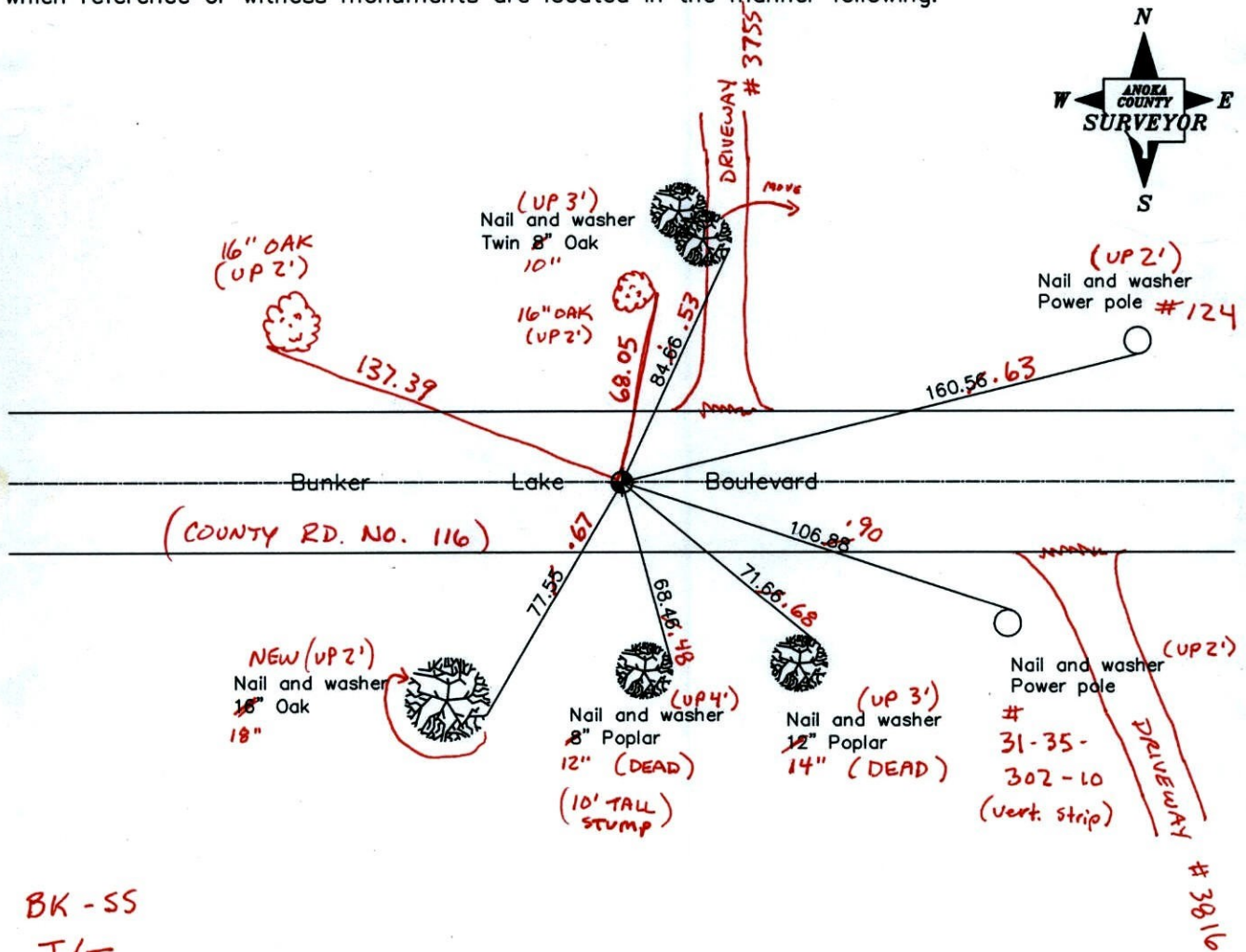
State of Minnesota

South 1/4 Corner of Sec. 26 Township 32 Range 23

I hereby certify that on the 23rd day of August, 1966, I found the described corner which was evidenced by a granite monument

and I further certify that to perpetuate the location of said corner, I did, at the exact location thereof, place a permanent marker consisting of a cast iron monument ✓

which reference or witness monuments are located in the manner following:



BK-SS

T/T

Revised date

11/26/91
8/05/96
12/13/01
4-18-11

N.A.D. 1983 Coordinates
(1996 adjustment)

County Project Coordinates	State Plane Coordinates
Northing <u>169454.8056</u>	Y _____
Easting <u>524099.0650</u>	X _____

Date 12/13/01

CERTIFICATE OF LOCATION OF GOVERNMENT CORNER

County of Anoka

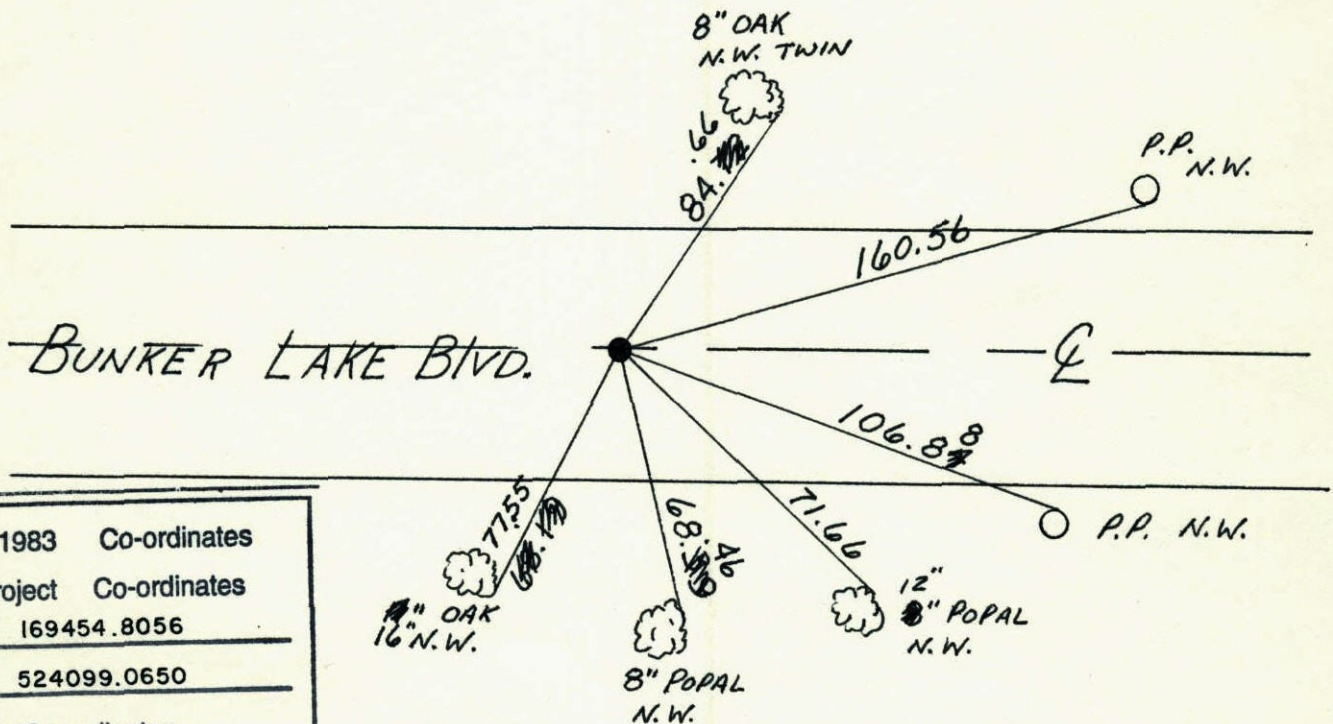
State of Minnesota

SOUTH QTR. Corner of Sec. 26 Township 32 Range 23

I hereby certify that on the 23 day of AUG., 1966, I found the described corner which was evidenced by GRANITE MON.

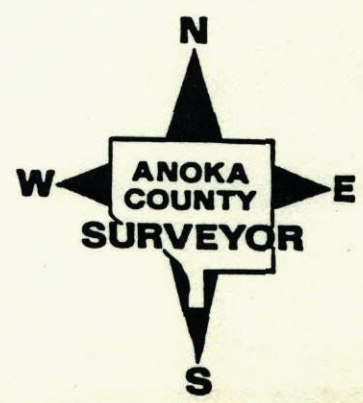
and I further certify that to perpetuate the location of said corner, I did, at the exact location thereof, place a permanent marker consisting of CAST IRON MON.

which reference or witness monuments are located in the manner following:



N.A.D.	1983	Co-ordinates
County	Project	Co-ordinates
Northing	<u>169454.8056</u>	
Easting	<u>524099.0650</u>	
State Plane Co-ordinates		
Y	_____	
X	_____	
Date	_____	

Revised date	Revised date	Revised date
1-29-91		
6-30-87		
11-26-91		
8-5-96		
12-13-01		



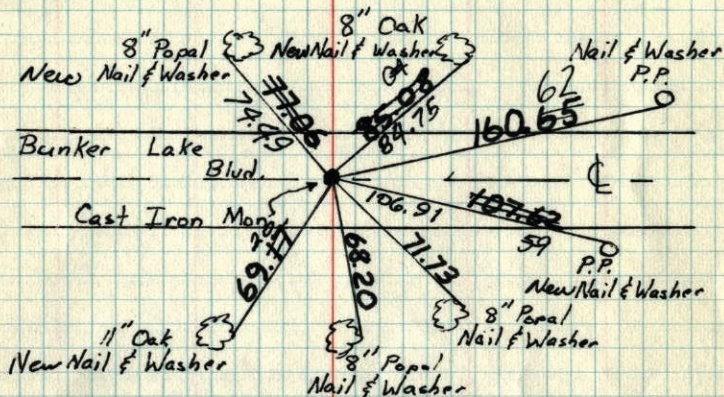
111
S 1/4 Cor. Sec. 26-T32-R23

Found granite monument down 15" ±
from area resurvey.

Set Cast Iron Monument flush.

Aug. 23, 1966
M. D. Anderson
R. Smith
D. Powell

Tie Check
May 25, 1971
M. D. Anderson
R. Brien



Tie Check
June 13, 1975
D. Dahl
B. Sannerad
G. Adams

TIE CHECK
June 28, 1984
D. Ross
G. Lips
R. Bennett

Tie Check
June 19, 1978
D. Dahl
B. Stephens
M. Kilrow

TEMPERATURE CORRECTED
AND HORIZONTALLY
TAPED MEASUREMENTS

ROLAND W. ANDERSON
COUNTY SURVEYOR
ANOKA COUNTY, MINNESOTA

106
S 1/4 Cor. Sec. 26, T32, R23

Found granite monument down 15" ±

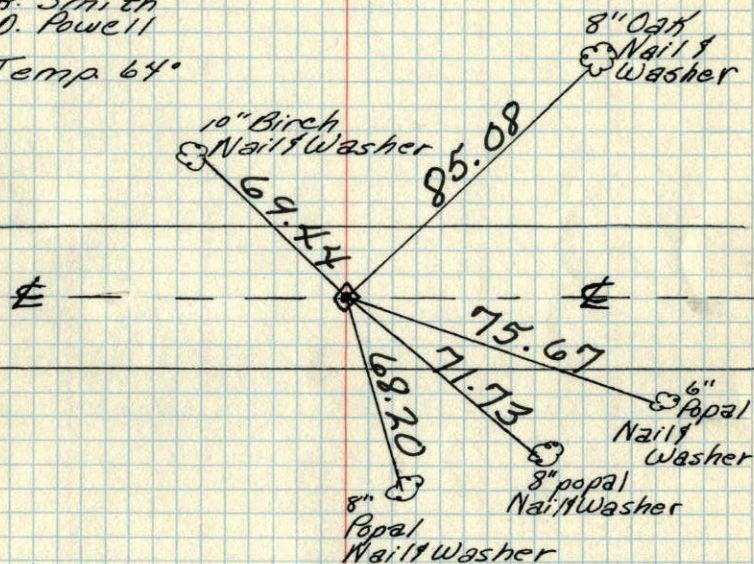
Found From area resurvey

Set cast iron monument. Flush

Aug. 23, 1966

M. D. Anderson
R. Smith
D. Powell

Temp 64°



TEMPERATURE CORRECTED
AND HORIZONTALLY
TAPED MEASUREMENTS

ROLAND W. ANDERSON
COUNTY SURVEYOR
ANOKA COUNTY, MINNESOTA

5/4 Cor. Sec. 26-T32-R23

found Granite Mon. down 15" ~~5'~~
 found from area resurvey
 set Cast Iron Mon. Alush

Aug. 23, 1964

M. D. Anderson

R. Smith

D. Powell

Temp. 64°
New tape